

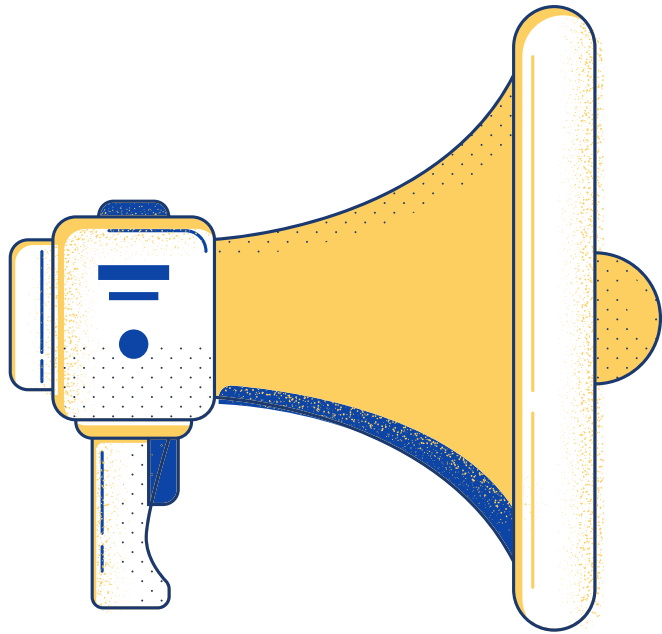
# 2023 Summary

DATE: JUNE 13, 2023 TO DECEMBER 31, 2023

---

Cultivating  
Grassroots  
Engagement  
and Community  
Expertise for An  
Equitable  
Lithium Valley  
(SB 125)





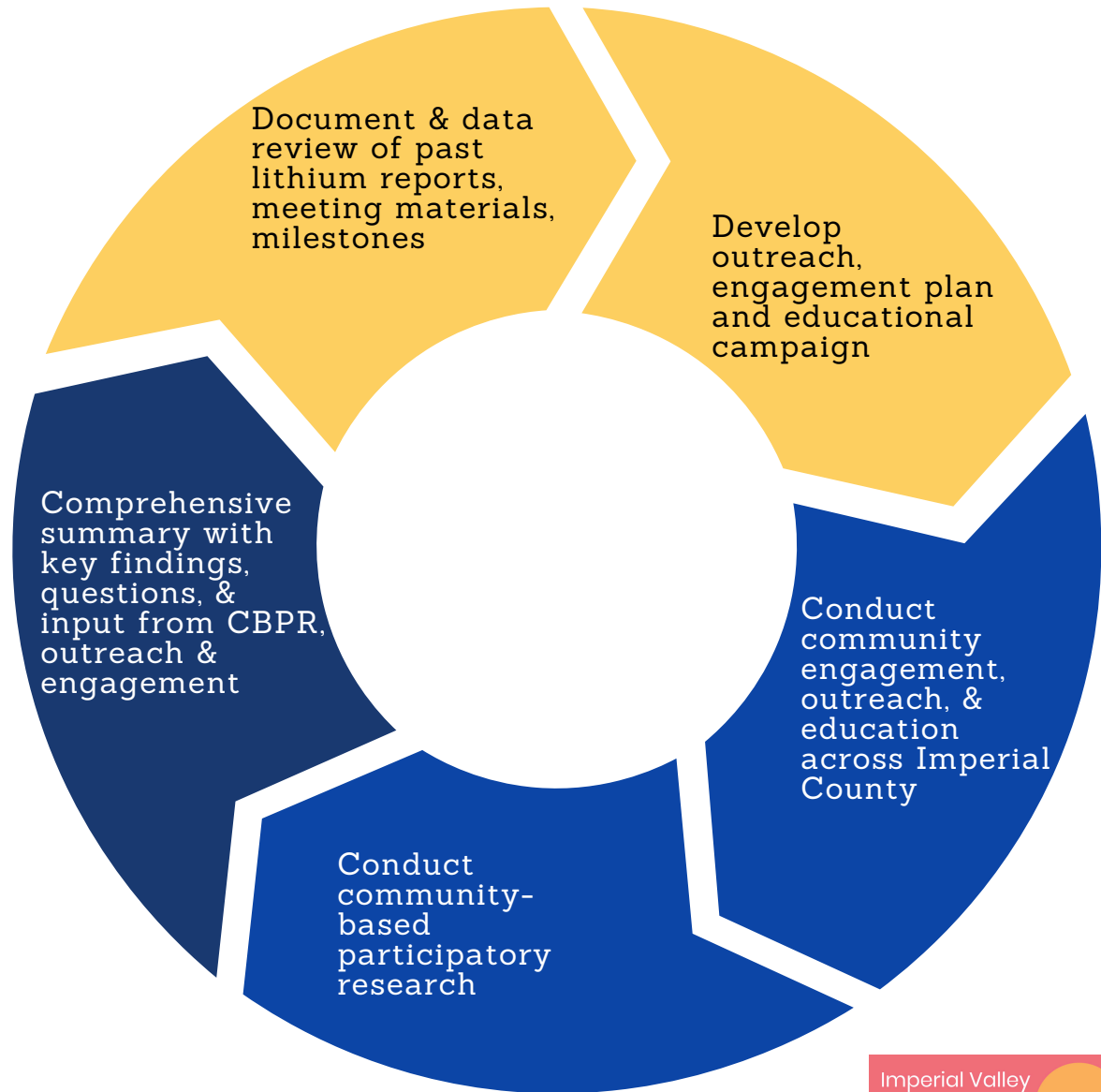
**We are an  
intergenerational  
organization of  
community members who  
advocate for community  
empowerment, social and  
environmental justice,  
and health equity. Our  
vision is simple - an  
Imperial Valley where all  
families can live, work,  
dream, and thrive.**

# Project Overview

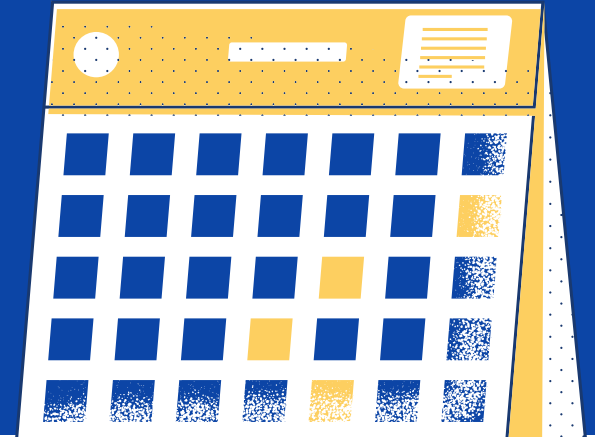
PHASE 1: PLANNING  
& DISCOVERY  
(JUNE - AUG 23')

PHASE 2: OUTREACH,  
ENGAGEMENT,  
EDUCATION & CBPR  
(SEPT - APRIL 24')

PHASE 3: ANALYSIS  
& DISSEMINATION  
OF KEY INSIGHTS  
MAY - JUNE 24')



# 2023 OBJECTIVES



---

Task 1.1: Ensure alignment of timeline and desired outcomes across stakeholders.

---

Task 1.2: Ensure outreach, engagement, education, and research activities and communities/geographies reached is complementary and enhances the activities of other community based organizations that are selected for this funding opportunity.

---

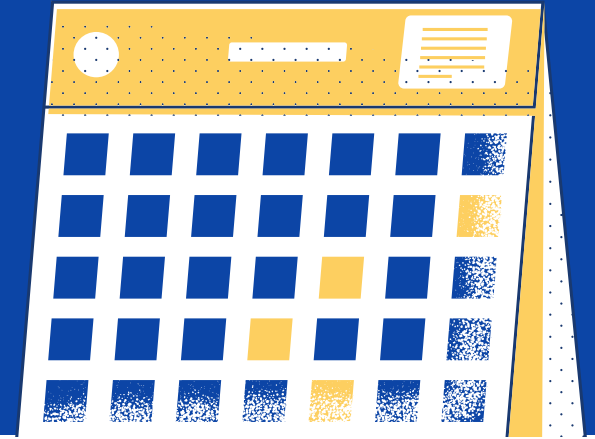
Task 1.3: Summarize key documents with historical context about lithium development and community concerns and feedback to help inform the planning. The goal of using secondary data to identify a list of neighborhoods with the most disadvantaged social and environmental conditions.

---

Task 1.4: Develop a final outreach, engagement and education plan.

Develop a final community-based participatory research plan

# 2023 OBJECTIVES



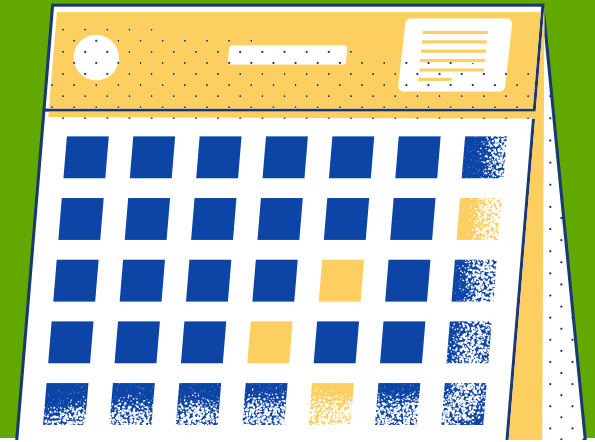
---

Task 2.1: Conduct robust outreach and engagement on key topics on lithium development and on the Salton Sea Renewable Resource Specific Plan and the Programmatic Environmental Impact Report

---

Task 2.2: Engage in community based participatory research to elevate key concerns, questions, and feedback from community residents

# 2023 PROGRESS TOWARDS OUR OBJECTIVES



---

Task 1.1: We have met at least one time/month with the County to ensure alignment of timeline and desired outcomes across stakeholders.

---

Task 1.2: We have met at least one time/month with other CBOs to ensure outreach, engagement, education, and research activities & communities/geographies reached is complementary and enhances the activities of other community based organizations that are selected for this funding opportunity.

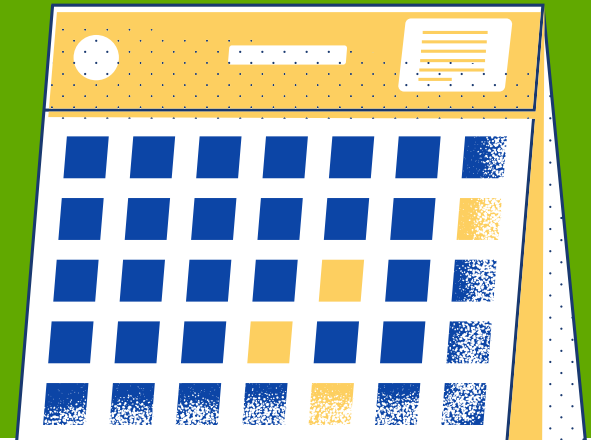
---

Task 1.3: Our team reviewed dozens of key documents with historical context about lithium development and community concerns and feedback to help inform the planning. These documents like the Blue Ribbon Commission Report have become part of our educational curriculum and helped us come up with our research question.

---

Task 1.4: Our team has developed a countywide outreach plan, an educational curriculum that is informed by dozens of sources to give residents a comprehensive overview of lithium developments. We put together our research plan including observations, research question, and methods for collection.

# 2023 PROGRESS TOWARDS OUR OBJECTIVES



---

Task 2.1: We kicked off our outreach, engagement, and educational campaign conducted lithium community meetings: Conduct education and engagement during a 30-90 minute meetings. Answered community resident questions and fostered discussion.

Conducted digital & grassroots outreach promoting our lithium community meetings, countywide.

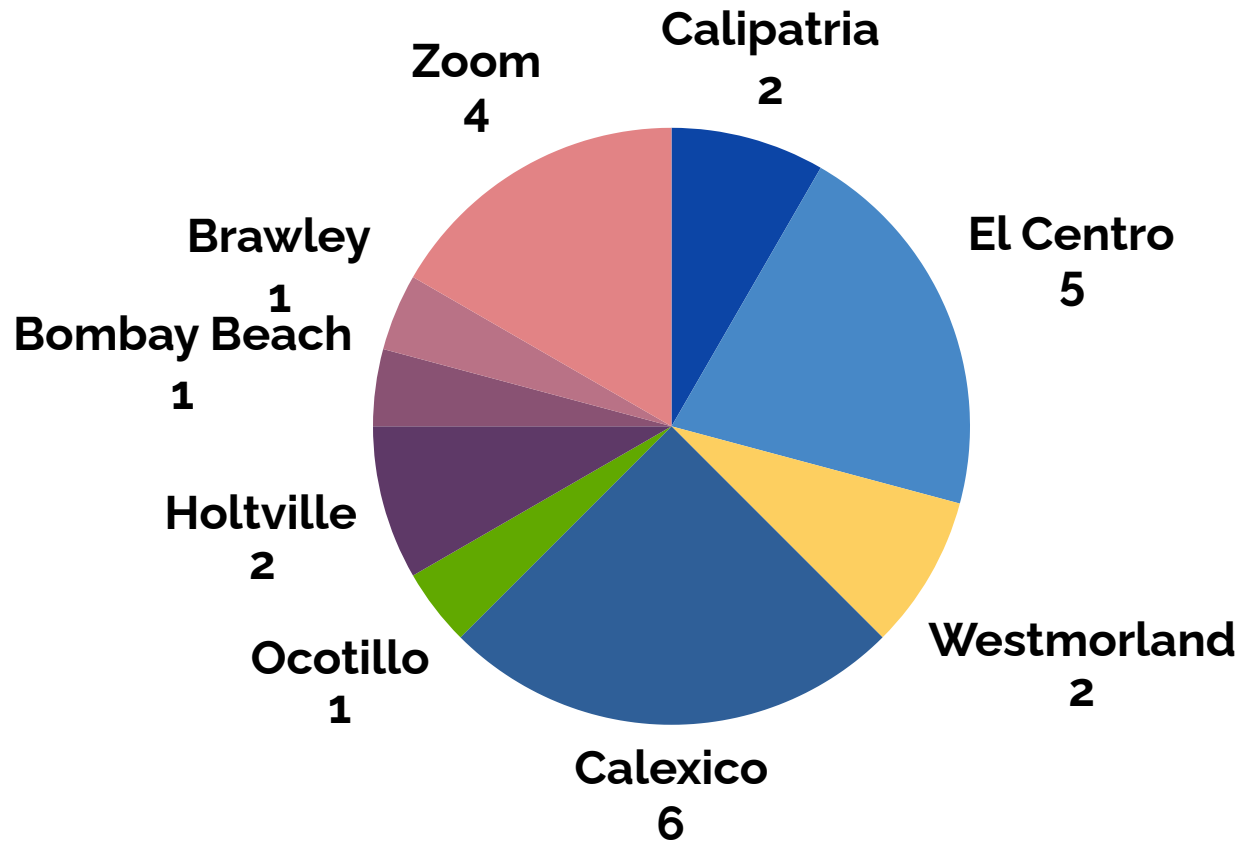
Hosted resource tables:  
Conducted lithium development-related education using large visuals and flyers and outreach for the upcoming lithium community meetings.

---

Task 2.2: We kicked off our data collection with our primary method being observations, documenting resident questions. Our research question is: What questions do community residents have about lithium developments?

# SUMMARY OF OUTREACH, ENGAGEMENT, EDUCATION ACTIVITIES IN 2023

## Cities/areas reached June - December 2023



# RESEARCH QUESTION: WHAT QUESTIONS DO COMMUNITY RESIDENTS HAVE ABOUT LITHIUM DEVELOPMENTS?

## June - December 2023 Key Takeaways

Themes	Bombay Beach	Brawley	Calexico	Calipatria	El Centro	Holtville	Imperial	Ocotillo	Westm orland	Zoom
<b>Lithium tax use:</b> "Who oversees the local governments to make sure they're going to spend the money the way it's supposed to be spent?"				●	●			●	●	
<b>Community Benefits:</b> "Are the companies that are coming in offering local contracts if services cannot be met? When the prisons came in they hired locals before they ventured out"	●			●	●	●	●		●	
<b>Process/ Timeline:</b> What kind of outreach/ engagement has the county done?	●	●			●	●		●	●	
<b>Community Concerns - Environmental/ Public Health:</b> Why are the deposits happening in the area? What are their physical composition that makes them prone in this area?	●		●	●	●		●	●	●	
<b>Community Concerns - Land Use/ Resource Use:</b> "[in terms of water] What is going to happen to that land [that doesn't get enough water]? What plans do they have in that land that they're going to follow? Any of the water thats being used in the plants, will it be getting filtered and sent on down to the solvency as replacement?"	●		●	●	●			●	●	

# HOW TO REACH US:



**EMAIL: [INFO@IVEQUITYJUSTICE.ORG](mailto:INFO@IVEQUITYJUSTICE.ORG)**



**TEXT OR CALL: (760) 618-1651**



**@IVEQUITYJUSTICE**

---

Cultivating  
Grassroots  
Engagement  
and Community  
Expertise for An  
Equitable  
Lithium Valley

