



# LITHIUM VALLEY



**A Leader in Clean Lithium**  
Sustainable Lithium Recovered from Geothermal Brine

Southern California



Photo Courtesy of BHE Renewables

# Harvesting Clean Energy in **Harmony with Agriculture**

**SUSTAINABLE LITHIUM  
RECOVERED FROM  
GEOTHERMAL BRINE**

**Renewable  
Energy**

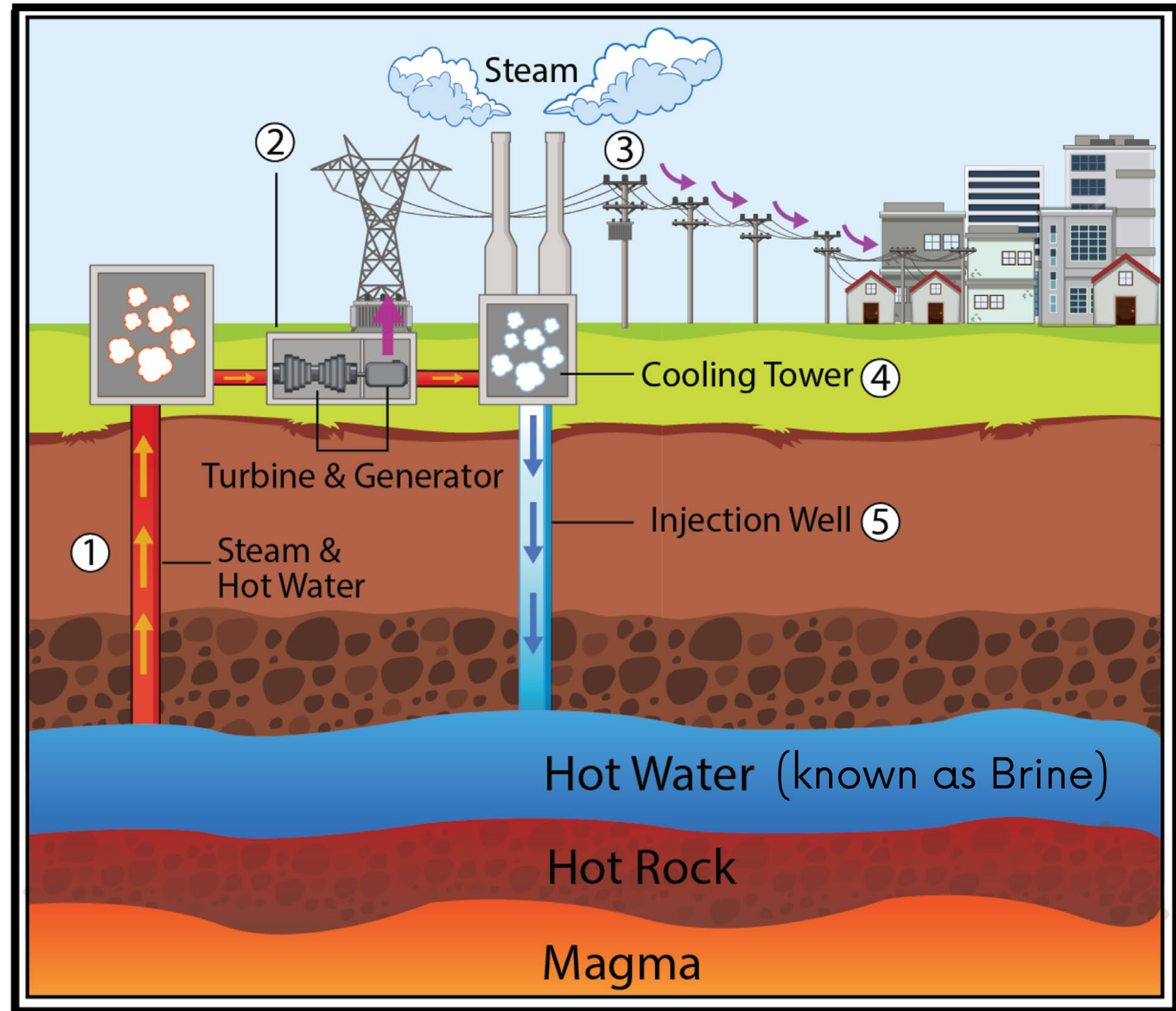
**Small Land  
Footprint**

**No Mining or  
Evaporation  
Ponds**

**IMPERIAL COUNTY HAS BEEN PRODUCING GEOTHERMAL ENERGY FOR OVER 40 YEARS!**

# How Does Geothermal Work?

- ① Steam & hot water rise naturally from below ground
- ② Steam causes the turbine to spin & create energy. The generator sends the energy to the power grid
- ③ Energy is used to power the community
- ④ As the hot water cools, the extra steam comes out of the cooling towers
- ⑤ The hot water is returned using an injection well





# IMPERIAL COUNTY LITHIUM RECOVERY

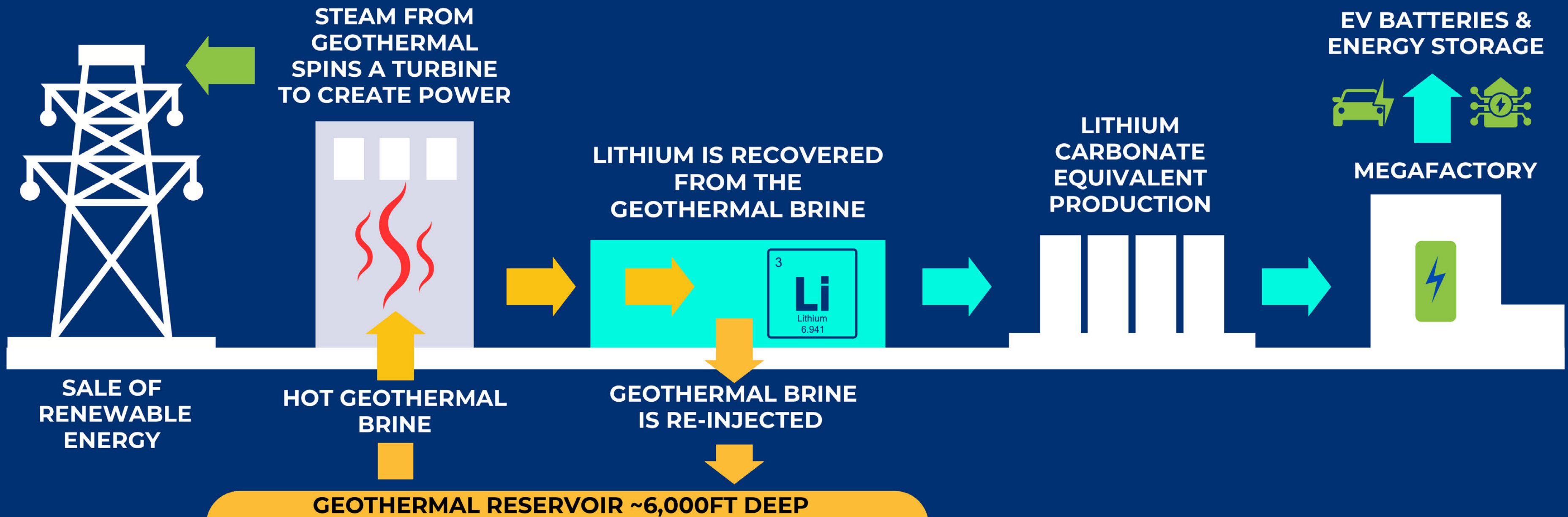
**17**

**MILLION+ METRIC TONS**

Potential Lithium (LCE) Available for Sustainable Extraction from Geothermal Brine in Imperial County, CA



**375 million**  
Electric vehicle batteries!



# Traditional Lithium Mining



Evaporation Ponds | Chile

**Catastrophic to  
the Environment**



Hard Rock Mining | Australia

Traditionally, lithium mining has predominantly occurred through hard rock mining and evaporation ponds, which are both catastrophic to the environment.

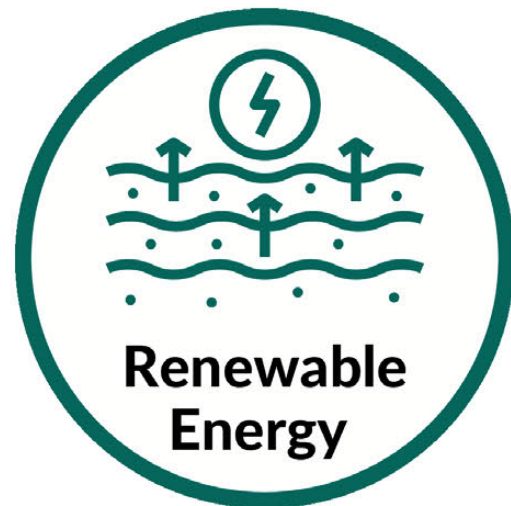
---

**There is NO MINING in Lithium Valley**



# Lithium Recovery from Geothermal Brine

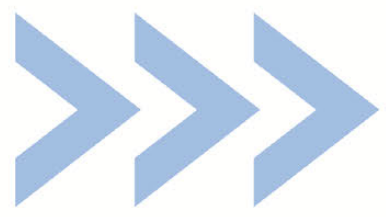
Clean Sustainable Solution | Produced in Harmony with Agriculture | Sourced in the US





# IMPERIAL COUNTY HOME TO 1/3 OF THE WORLD'S LITHIUM

**17 million<sup>+</sup> mt**  
of Lithium in the brine in our region



**375 million**  
Electric vehicle batteries!

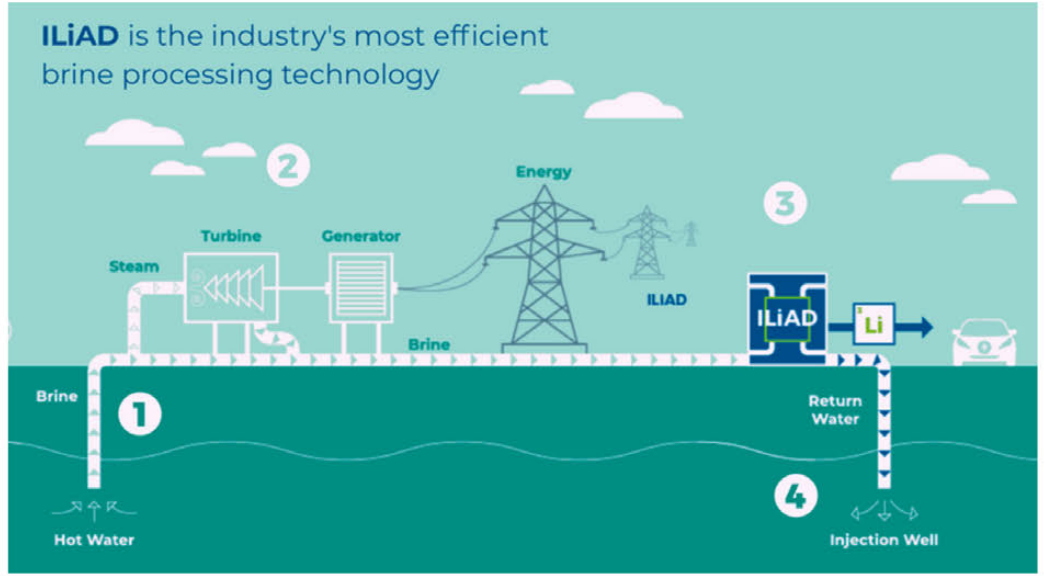


Scan to Read  
the Report

In 2023 the Department of Energy and Lawrence Berkeley National Labs Study validated the amount of lithium in our region



# IMPERIAL COUNTY LITHIUM RECOVERY





# Paving the Way for Development

## Lithium is a State & Federal Priority

- Blue Ribbon Commission
- The California Blueprint
- SB 125 - Engagement & Excise Tax

## We Are Streamlining Future Development

- Specific Plan and Programmatic EIR
- Baseline Report
- Workforce Development



“ We want to dominate in this transition. We see this as one of the greatest economic opportunities in our lifetime.

**CA Governor Gavin Newsom**

March 20, 2023, Imperial County



# SB 125 Overview

**\$5,000,000 Allocated to County of Imperial for Geothermal Development & Lithium Extraction**

- **\$3,850,000** to Prepare Programmatic Environmental Impact Report & Health Impact Assessment, and to Support Community Outreach
- **\$720,000** Engagement by Community-Based Organizations
  - County held an RFP and awards were given to:
  - Comite Civico del Valle: \$363,000
  - IV Equity and Justice: \$170,000
  - Los Amigos de la Comunidad: \$89,000
  - Raizes: \$72,000
  - Imperial Valley LGBT Resource Center: \$26,000
- **\$80,000** Tribal Engagement
- **\$350,000** to Support the Activities of an Ombudsperson to Engage with Stakeholders on Lithium Extraction, Rare-Earth Minerals, & Renewable Energy Generation



**500+ Community Engagement Events Have Been Held Since 2023**

# Specific Plan and PEIR

## What is a Specific Plan?

A specific plan is a regulatory tool that local governments use to guide development in a localized area. It allows analysis and land use designation to be determined

## Lithium Valley Specific Plan

Land area: ~51,786-acre area adjacent to the Salton Sea

## What is a PEIR?

A programmatic environmental impact report creates a comprehensive CEQA analysis for future development within a Specific Plan area

## Lithium Valley PEIR

Many CEQA topics are being reviewed including those listed below:

## The PEIR will analyze potential impacts associated with all CEQA topics:

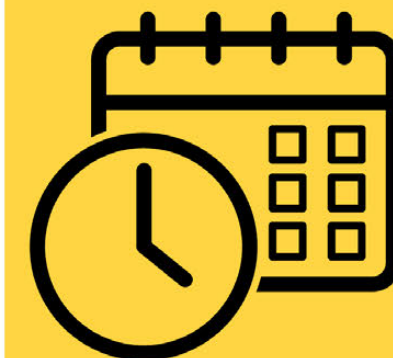
- Aesthetics
- Agriculture/Forestry Resources
- Air Quality
- Biological Resources
- Cultural Resources
- Energy
- Geology/Soils
- Greenhouse Gas Emissions
- Hazards/Hazardous Materials
- Hydrology/Water Quality
- Land Use and Planning
- Mineral Resources
- Noise
- Population and Housing
- Public Services
- Recreation
- Transportation
- Tribal Cultural Resources
- Utilities and Service Systems
- Wildfire
- Mandatory Findings of Significance

**Lead Consultants: RICK and Dudek**



## Why?

- Framework and guidance for future necessary infrastructure and facilities in Lithium Valley
- Will help streamline future development/permitting in area
  - Ex: Renewable energy facilities, mineral recovery, lithium battery manufacturing



## When?

Draft documents will be available for public review and comment beginning Q1 2025

# STRATEGIC PATHWAYS

## INDUSTRY COLLABORATION

- Workforce pipelines
- Vertically integrated growth



## STATE & FEDERAL SUPPORT

- Collaboration with agencies
- Grant funding



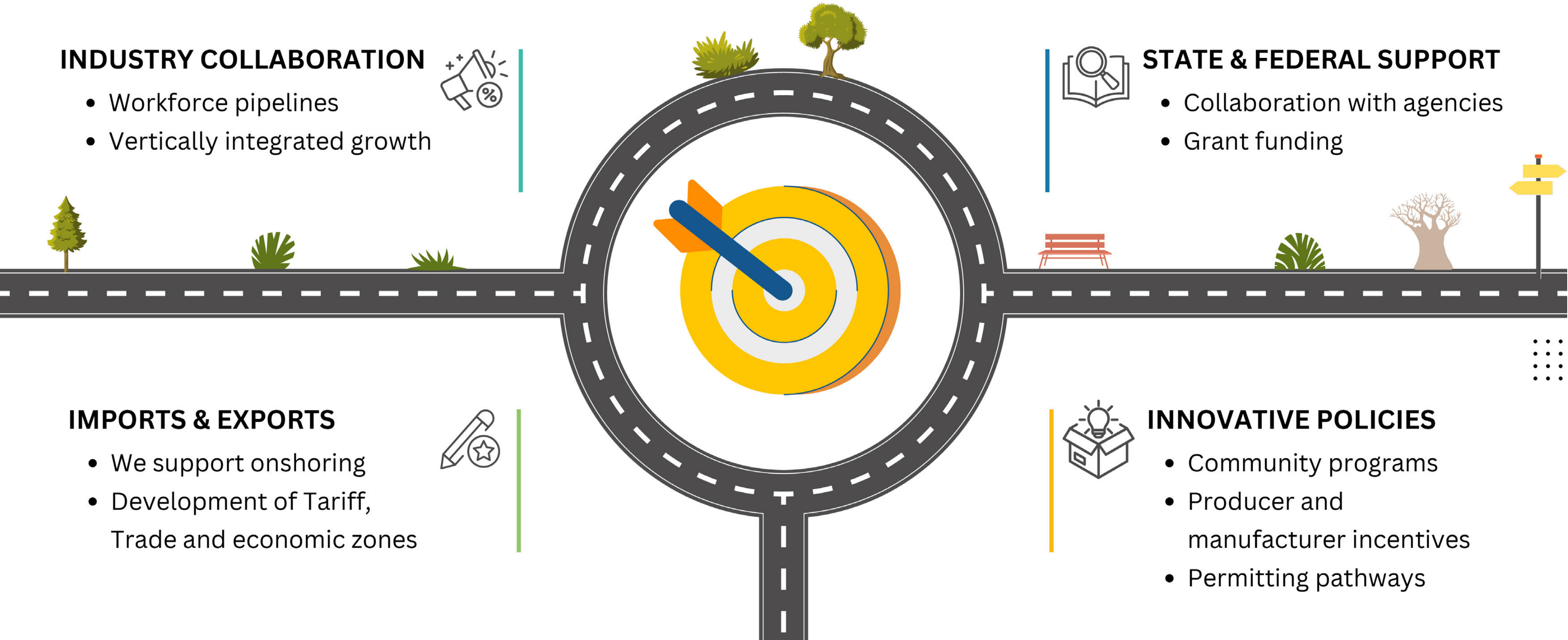
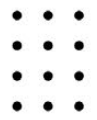
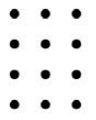
## IMPORTS & EXPORTS

- We support onshoring
- Development of Tariff, Trade and economic zones



## INNOVATIVE POLICIES

- Community programs
- Producer and manufacturer incentives
- Permitting pathways





# Community >>> Education >>> Workforce

**Imperial County is committed to investing in our community and creating workforce pipelines!  
An extensive list of initiatives are in progress, a few of those are highlighted here:**

- Excise Tax Community Benefit Plan
- Lithium Ombudsman
- Extensive Community Engagement
- Collaboration with K-12
- IVC Lithium Industry Force Training
- UCR Certification Programs
- SDSU STEM Facility
- Industry Internships
- Lithium Valley Clean Tech Hub
- Valley Works - Roadmap
- Business Development Center
- Mobile Workforce Center

# Workforce Development

## We Are Building Workforce Pipelines to Support Industry Labor Needs

- \$650,000 - Lithium Valley Workforce and Economic Development Needs Assessment Grant
- Workforce and opportunities roadmap

---

## Imperial Valley College - Education Programs

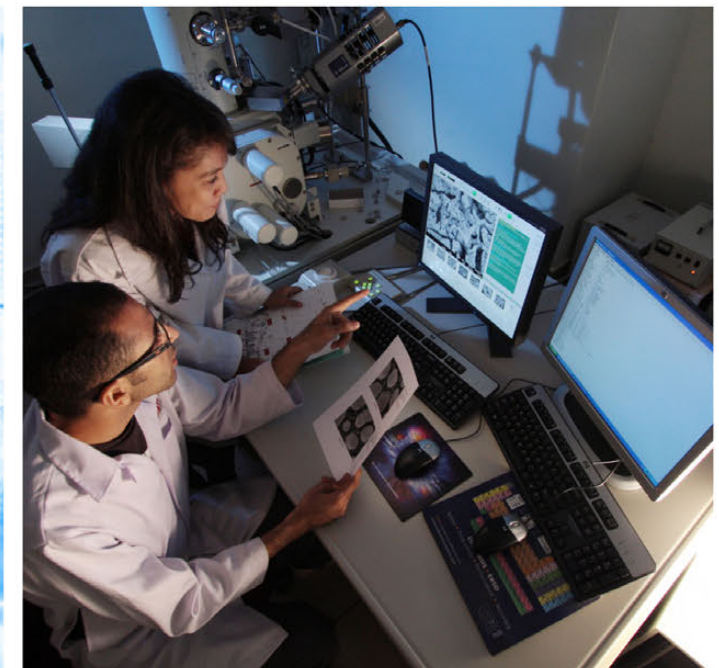
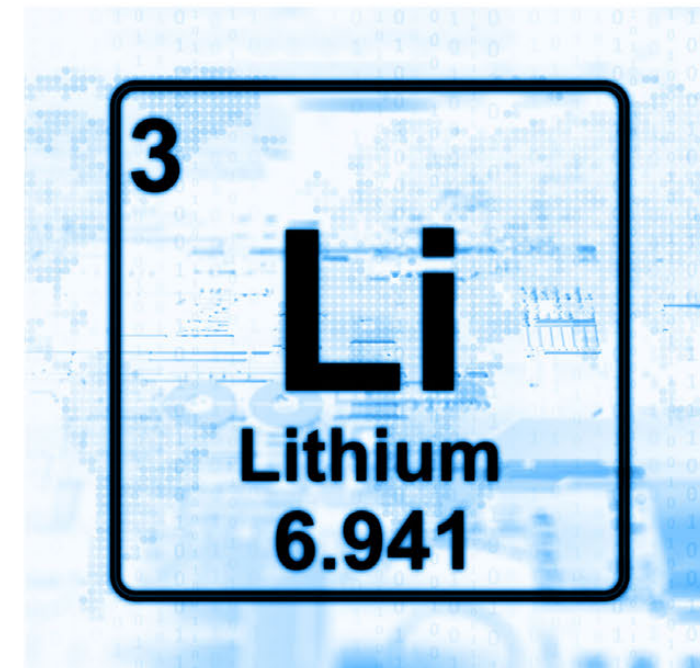
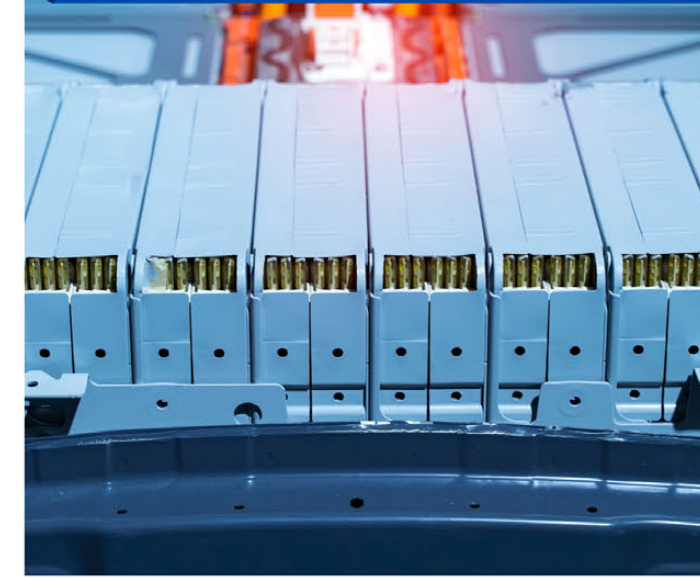
- **#1 Community College in the Nation!**
- Lithium Industry Force Training
- Workforce pipeline with industry and Imperial County
- 1 year certification programs - high school to career
  - Plant Operator
  - Chemical Lab Technician
  - Instrumentation Technician



# Lithium Valley Clean Tech Strategy Development Consortium



Economic Development Administration awarded \$500,000 to develop the regional coalition and strategic framework to further develop and implement direct lithium extraction from regional lithium brine deposits, contributing to a sustainable, inclusive, advanced-energy ecosystem in Southern California and securing the national lithium-based energy supply chain

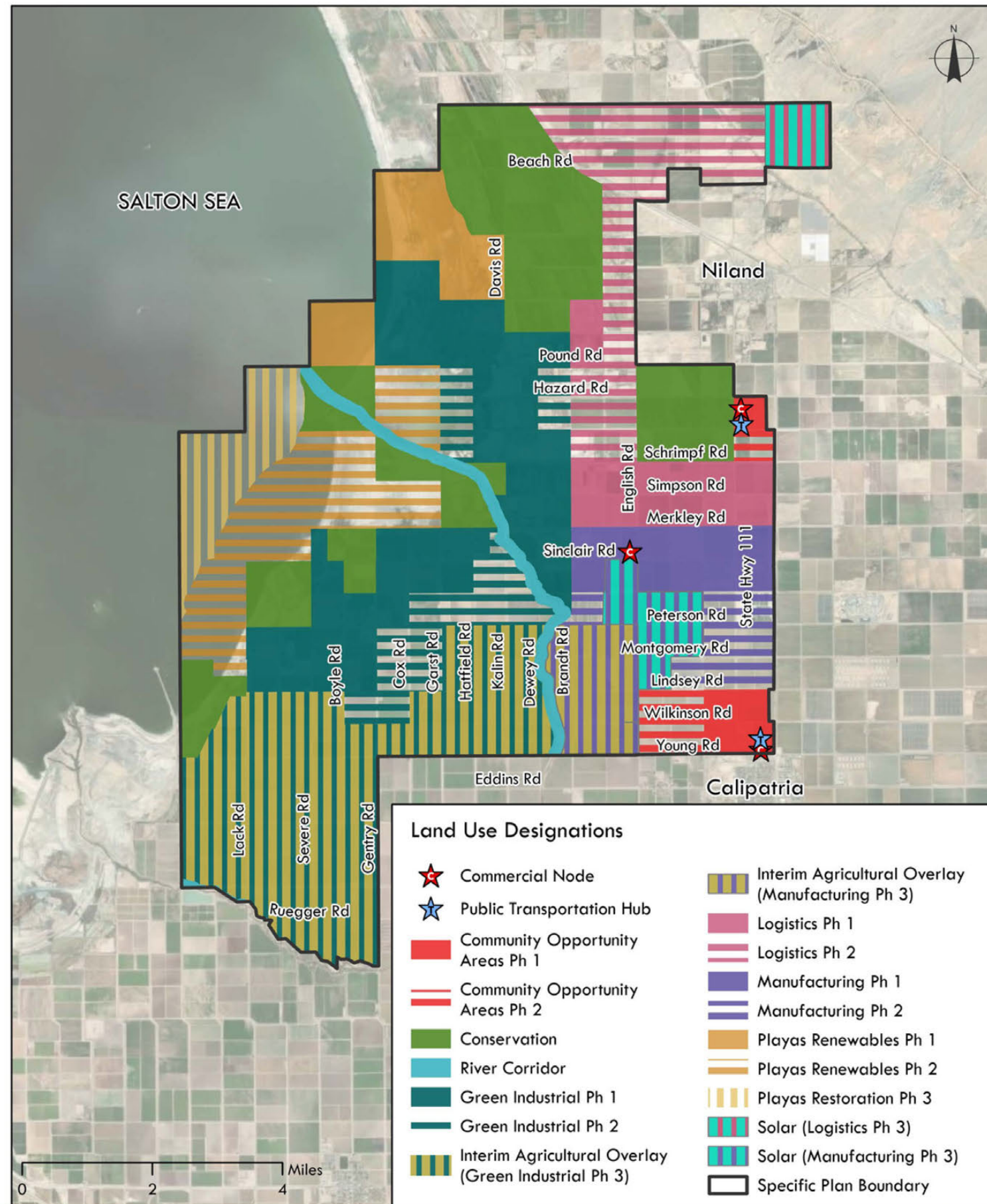


# Limitless Horizons

## Potential Industry Development

Lithium Valley is ideal for many businesses including:

- Battery Manufacturing
- Material Processing
- Recycling of Materials/Waste
- Auto Manufacturing
- Renewable Energy
- Community Spaces
- Data Centers
- Hydrogen Production
- Battery Storage
- Business Services
- Logistics
- and More!



Draft Land Use Map







# PROACTIVE POLICIES LOCATING IN IMPERIAL COUNTY

## Our Economic Team is Here to Help!

- Site Selection
- Entitlement Processing
- Permitting
- Utility Acquisition
- Access to Markets
- Labor Force Identification
- Labor Force Recruitment
- Higher Education Training
- Local/State/Federal Financial Incentives

## Imperial County Lithium Users Tax Rebate

### Suppliers Rebate:

Imperial County lithium suppliers will receive a tax rebate for lithium produced in the county and sold to manufacturers in the county

### Manufacturer's Rebate:

Companies located in Imperial County who purchase locally sourced lithium and use it for a value-added product will receive a tax rebate

**Tax Rebate: \$50/mt** | **Example: 5,000mt = \$250,000**



# What's Next?

## Education Campaign (in progress)

- LithiumValley.CA Imperial County website
- New K-12 renewable energy materials
- New megaWHAT?! segment on our website
- New Educational resources for the community

## Continued Presentations & Public Comment

- We are committed to ongoing community, investor, and stakeholder conversations to advance Lithium Valley
- Calendar of Local and National events planned





# STAY CONNECTED WITH LITHIUM VALLEY



**Follow Us**

@ImperialCounty



**Follow Us**

@LithiumValley.CA



**Follow Us**

@County of Imperial



**Discover More**

[www.LithiumValley.CA](http://www.LithiumValley.CA)