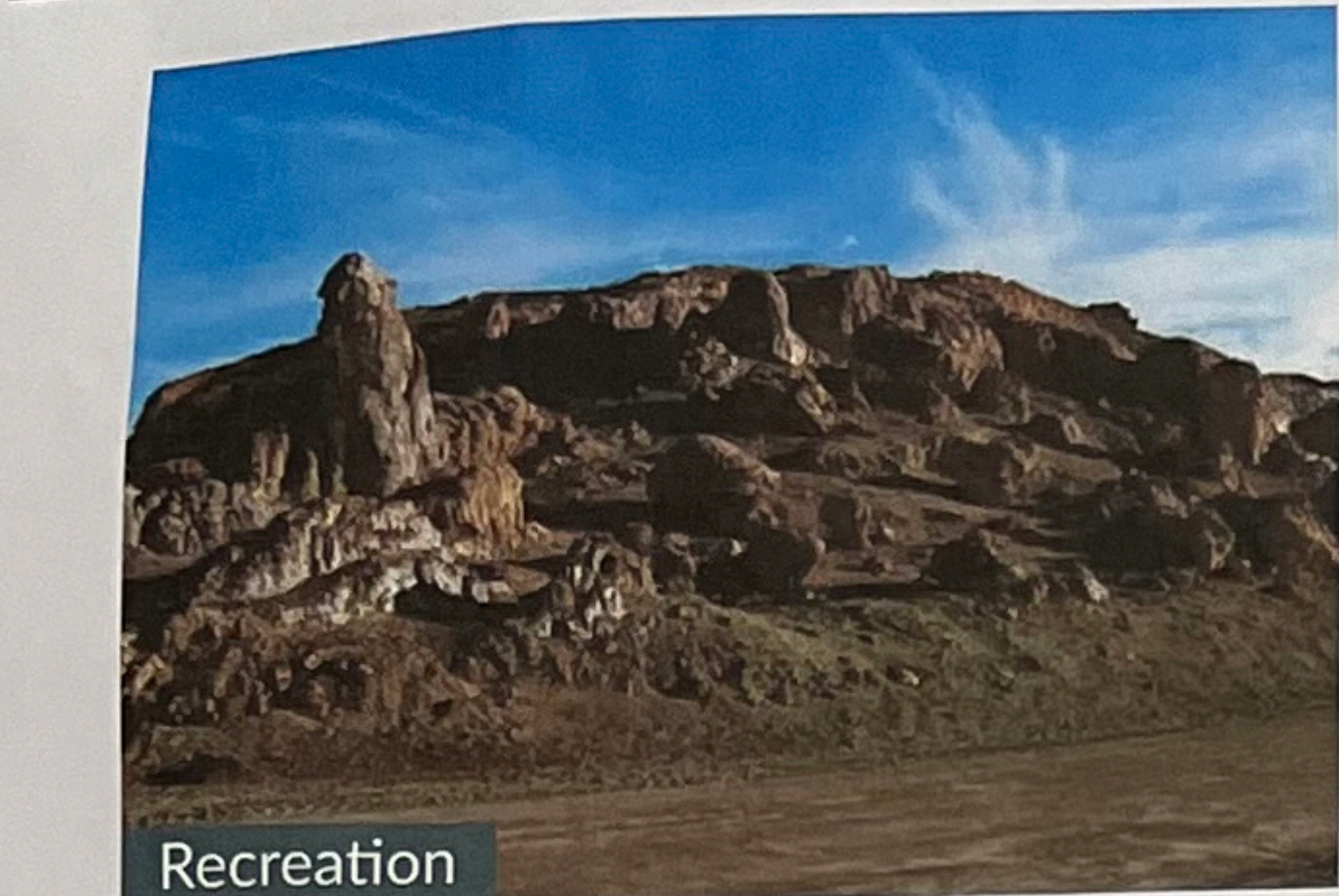


LAND USE



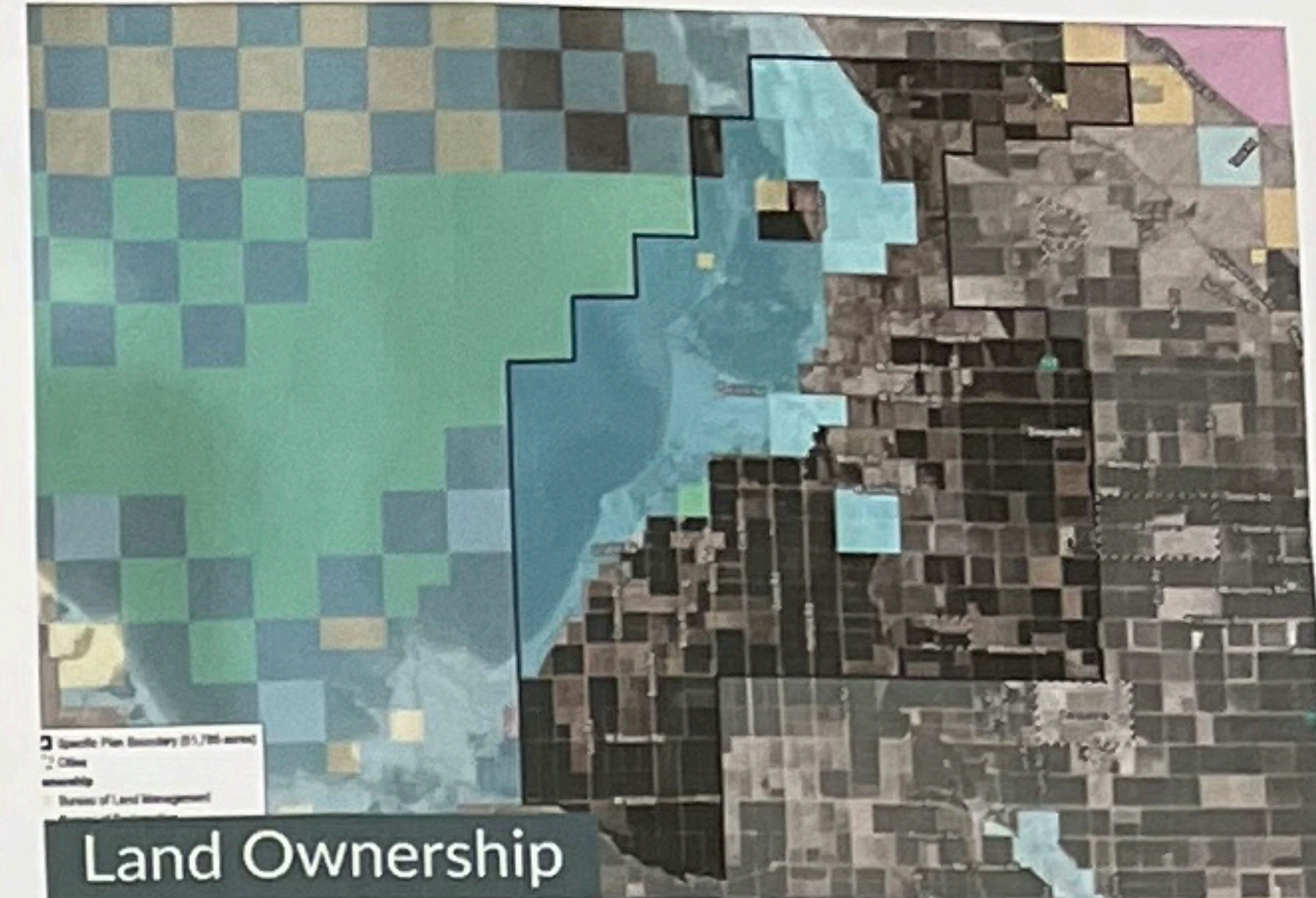
Recreation



Agriculture



Government/Public



Land Ownership

Constraints

- Compliance with Airport Land Use Compatibility.
- Infrastructure and utility land uses are limited to developed areas.
- Land use compatibility concerns between industrial and recreation, residential, or wildlife habitat.
- Government compliance for environmentally sensitive lands.

What are we missing?

What will happen to Spa Road, Bombay & Range Road?

Recognition of Historic injustice of colonialism + land

Inclusion of indigenous communities

How will the project address the reduction of water flowing into the sea?

Water infrastructure
- Sewers infrastructure

Will you be investing in medical infrastructure

Opportunities

- The Known Geothermal Resource Area will support site selection for renewable resource land uses.
- Maintaining nearby existing residential land uses and expand housing developments to support a future workforce population.
- Vacant and underutilized parcels offer land availability supportive of renewable energy and workforce opportunities.

What are we missing?

Will we include acknowledgment of the ancient Sacred Lake Cahulla? You are on Cahulla land! :)

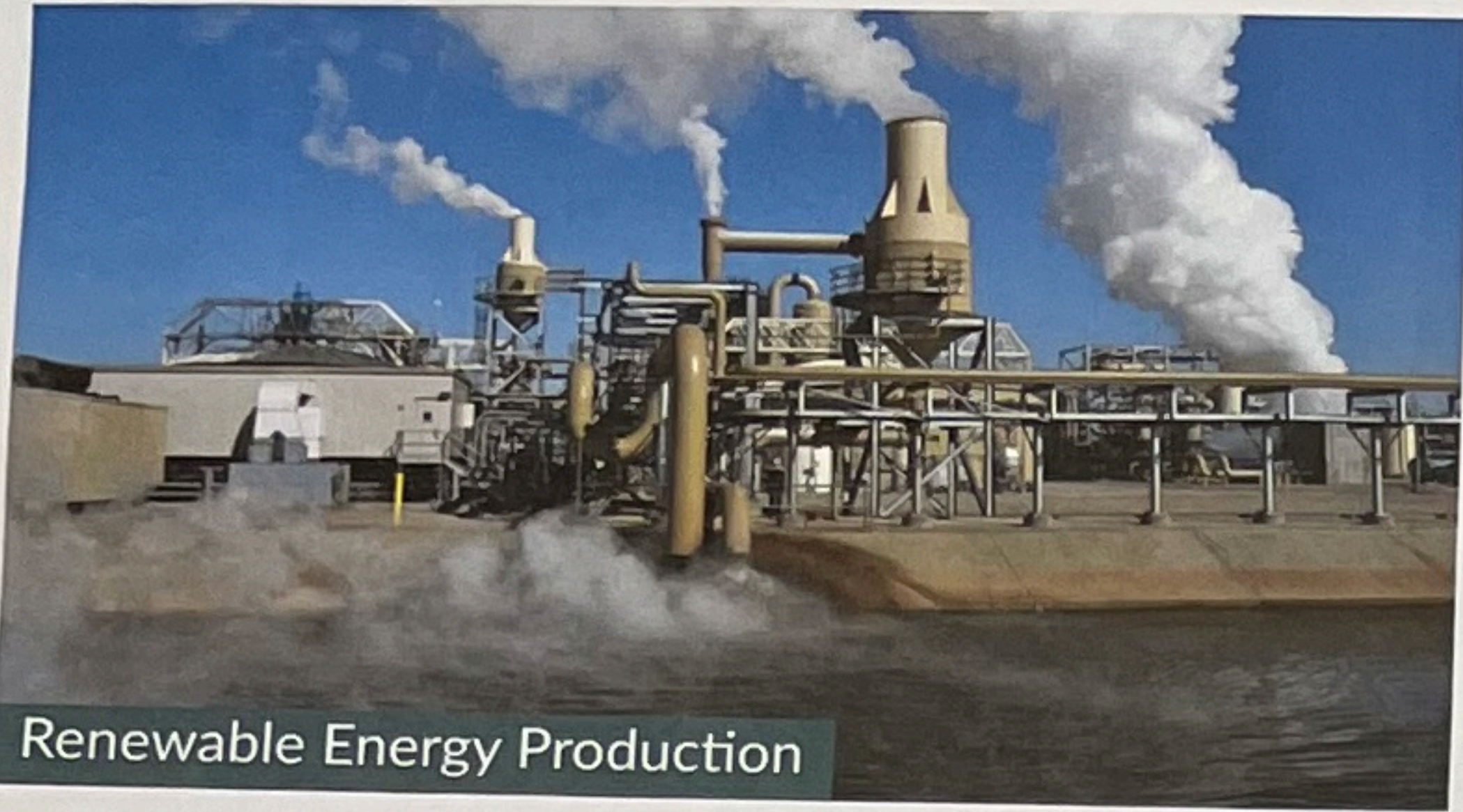
Respect tribal land & reserves

Does Quechan tribe hold any jurisdiction of the Areas?

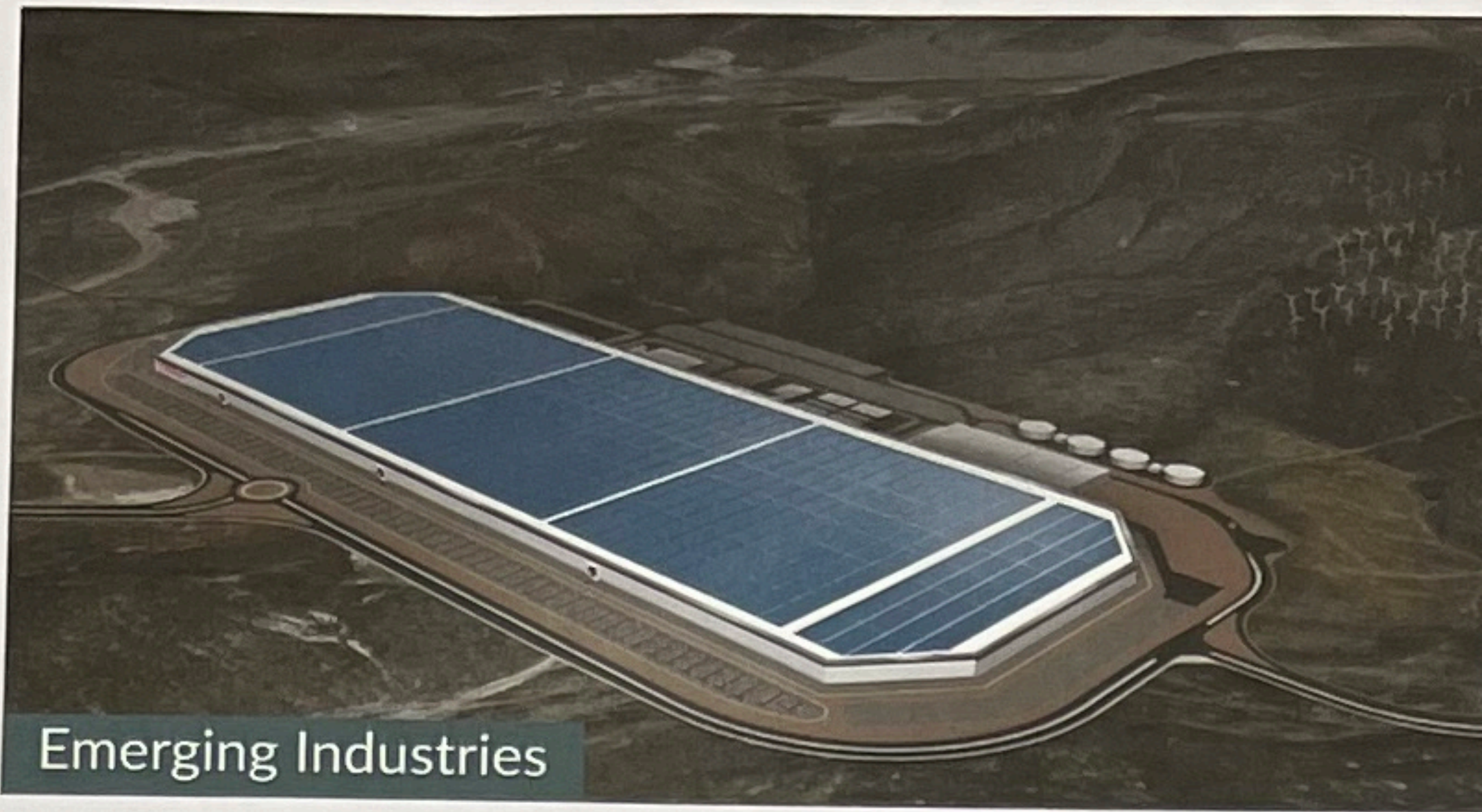
Will Land Use be changed? How long does it take?

Agricultural land ~~should~~ must stay for Agricultural purposes.

ECONOMICS & JOBS



Renewable Energy Production



Emerging Industries



Major Employers

Constraints

- Emerging industries require specialized training and education.
- Lack of housing and infrastructure near areas of potential job opportunities.
- Emerging industries can choose to pursue other states with these resources.
- Raw materials for manufacturing are susceptible to supply chain issues.
- Limited water supply for emerging industries.

What are we missing?

Will we be investing in safer/more ethical practices for farm workers or are we just going to profit from their marginal skills?

Technical Training = Certification need to start now!

When will this happen in Bombay?

Opportunities

- Nation's largest potential deposits of lithium.
- Renewable energy resources and lithium extraction can expand the quantity and quality of employment across Imperial County.
- Educational institutions can benefit by offering tailored training programs for young people.
- Potential development of lithium battery manufacturing operations to provide necessary supply chain support.

What are we missing?

We need to know the jobs & the skills needed

What type of jobs will be available? High School diploma or more Education Needed

STEM at HS + JH + Elementary

pre-apprenticeship programs

Develop investment pools source for related & integrated business develop

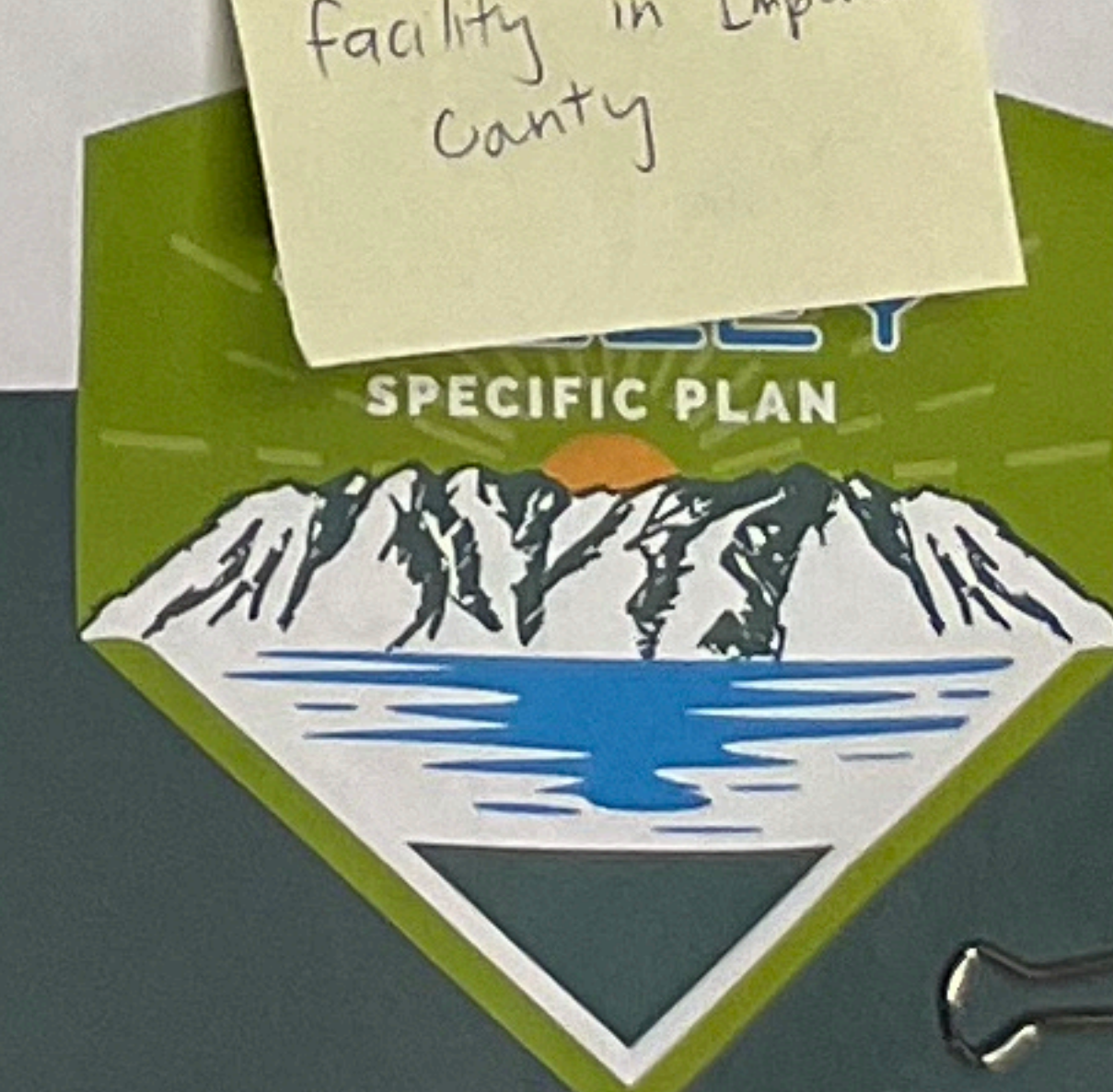
Elective courses (ie shop classes) at local high schools

existing RV Park for workforce + travel trailers

career fair outreach @ high schools

possibly 90 jobs for lithium extraction

Trainings available in Mexicali or set up a facility in Imperial County



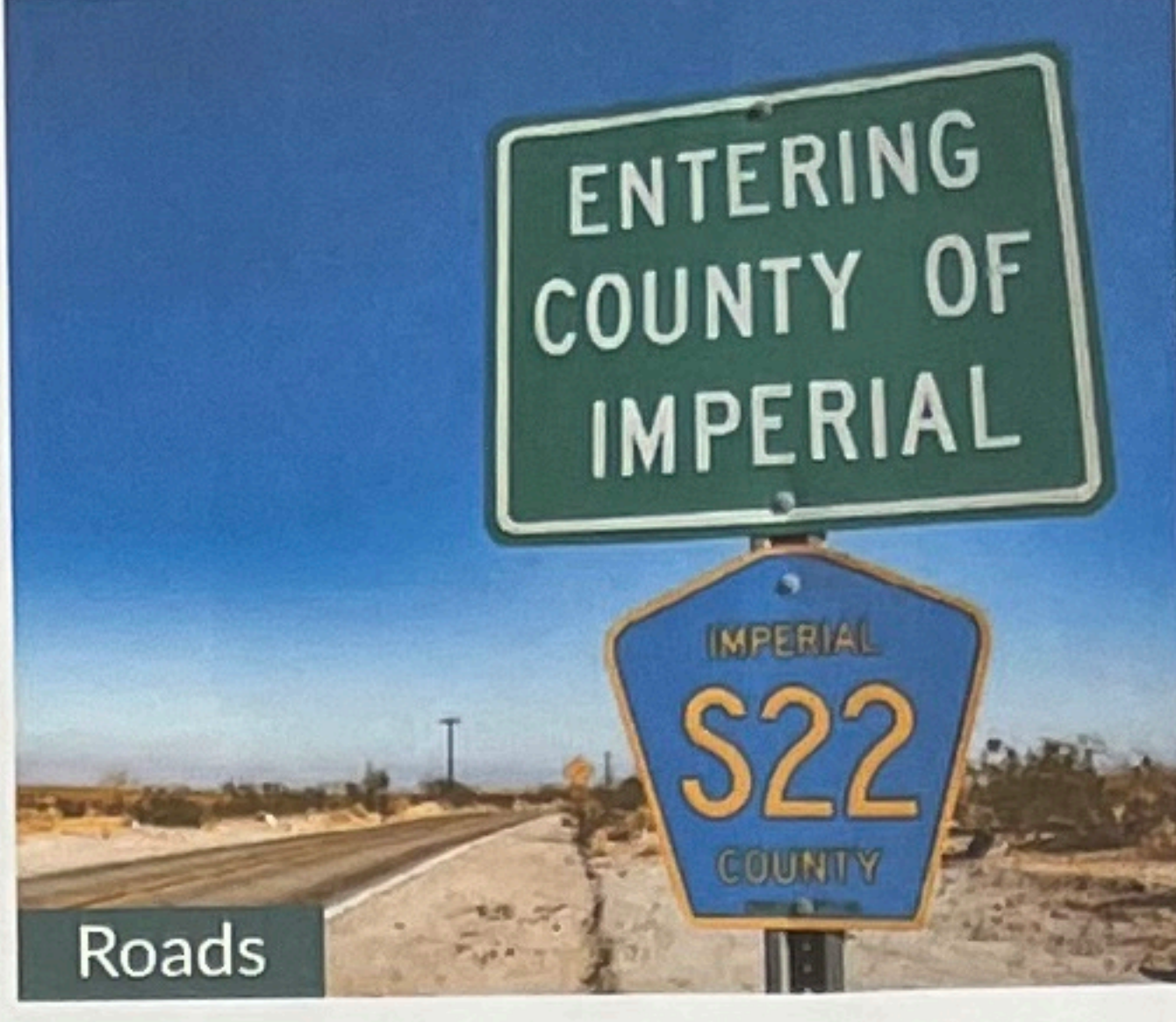
TRANSPORTATION



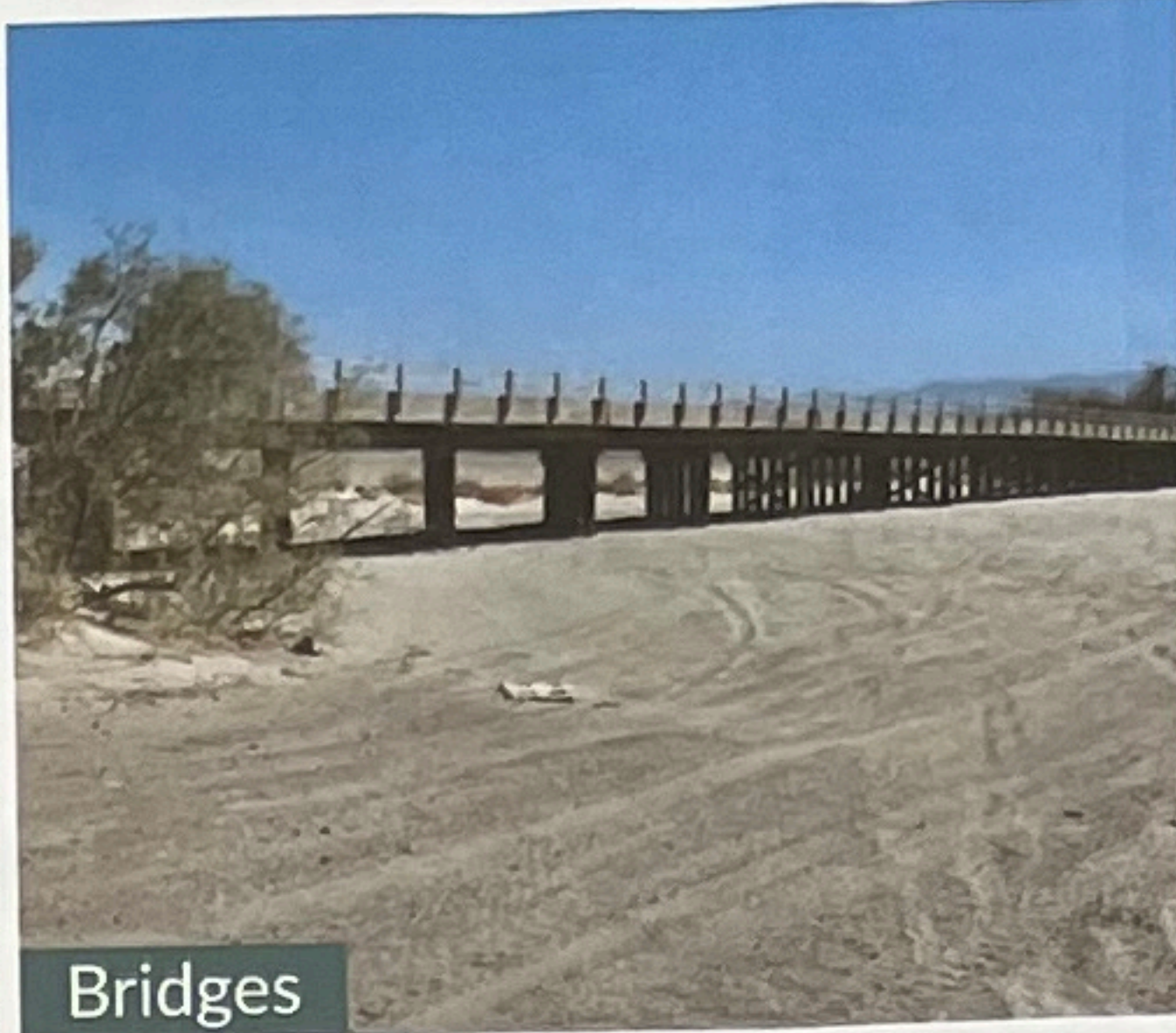
Airports



Trains



Roads



Bridges



Goods Movement

Constraints

- The majority of existing roads are currently unpaved, limiting development without significant improvement costs.
- Current pavement conditions are fair to poor on the majority of paved roads.
- Roadways may be too narrow for two-way heavy truck traffic.
- Bridges across the Alamo River are limited to only Sinclair Road.
- Most of the existing bridges in the Study Area would need to be removed and rebuilt to improve operations.
- Bus transit service typically exceeds one hour throughout the day.
- Imperial County Airport primary use is general aviation, military, and small-scale air cargo for FedEx and UPS
- No local air traffic control for Imperial County Airport
- Union Pacific Railroad has their own policies for new industrial development

What are we missing?

Roadways will need to be constantly resurfaced

As we prepare for Lithium Valley to transform Imperial County, will we be addressing the 100 of 177 bridges in Imperial County that are made out of wood?

Prioritize accessibility of underserved community at all projects

EV CHARGING STATION
Bulldog Transport

Why not expand Brawley Airport to handle larger aircraft & cargo? Closer to Lithium site

What about Bombay?
Meetings are at the same day & times?

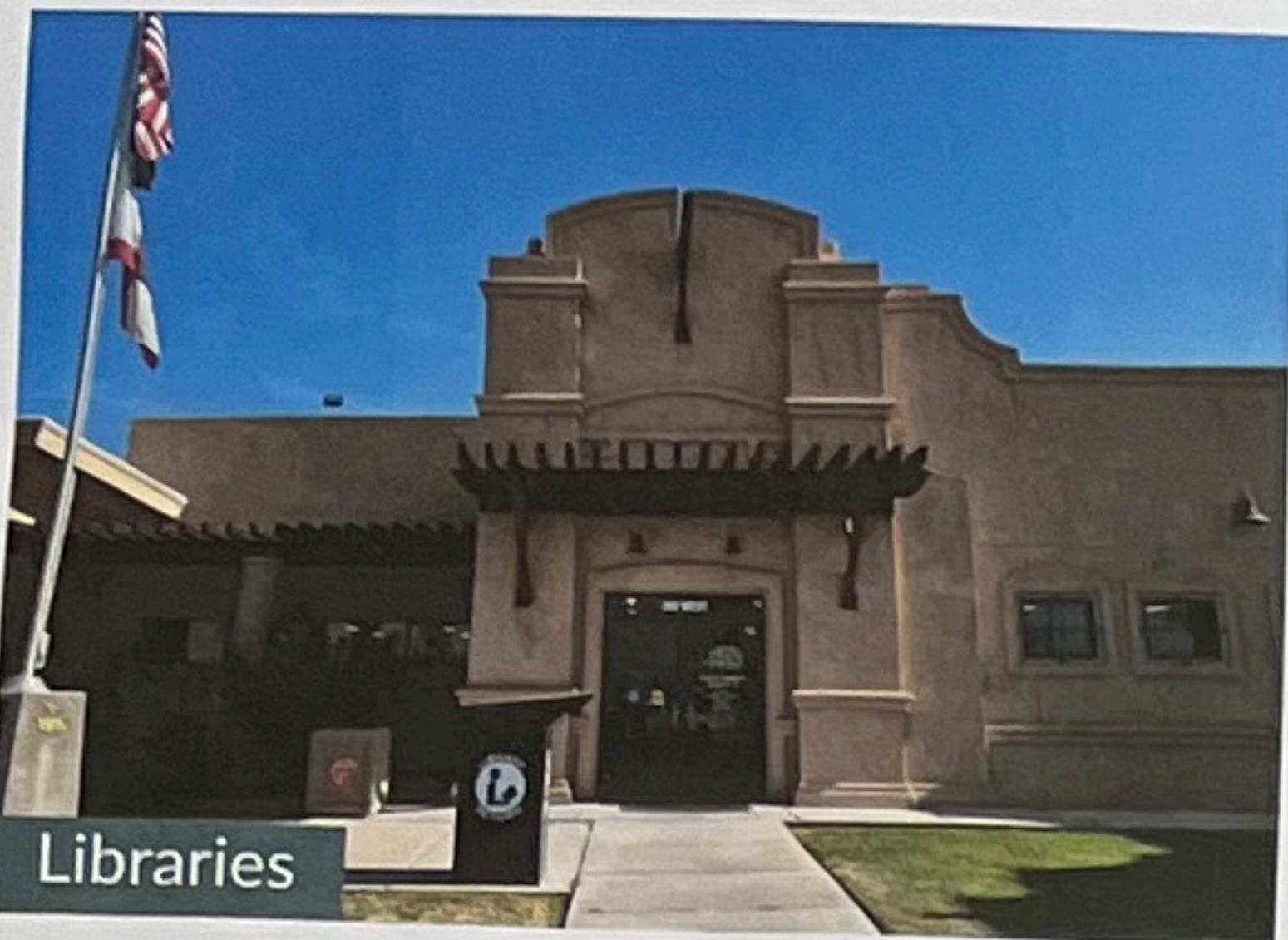
Opportunities

- There is an extensive roadway network within the Specific Plan boundary, in a grid pattern.
- Existing traffic volumes in the Specific Plan study area are relatively low, and there is sufficient capacity on the existing roadways to accommodate additional traffic from new development.
- Federal funding is secured to replace the Brandt Road bridge over the Alamo River with a new single-span bridge.
- Provide additional bus stops within the Study Area where new development may occur.
- Opportunity for rail connection south of Niland Junction for possible industrial or manufacturing uses
- Expand Imperial County Airport for larger-scale air cargo capabilities

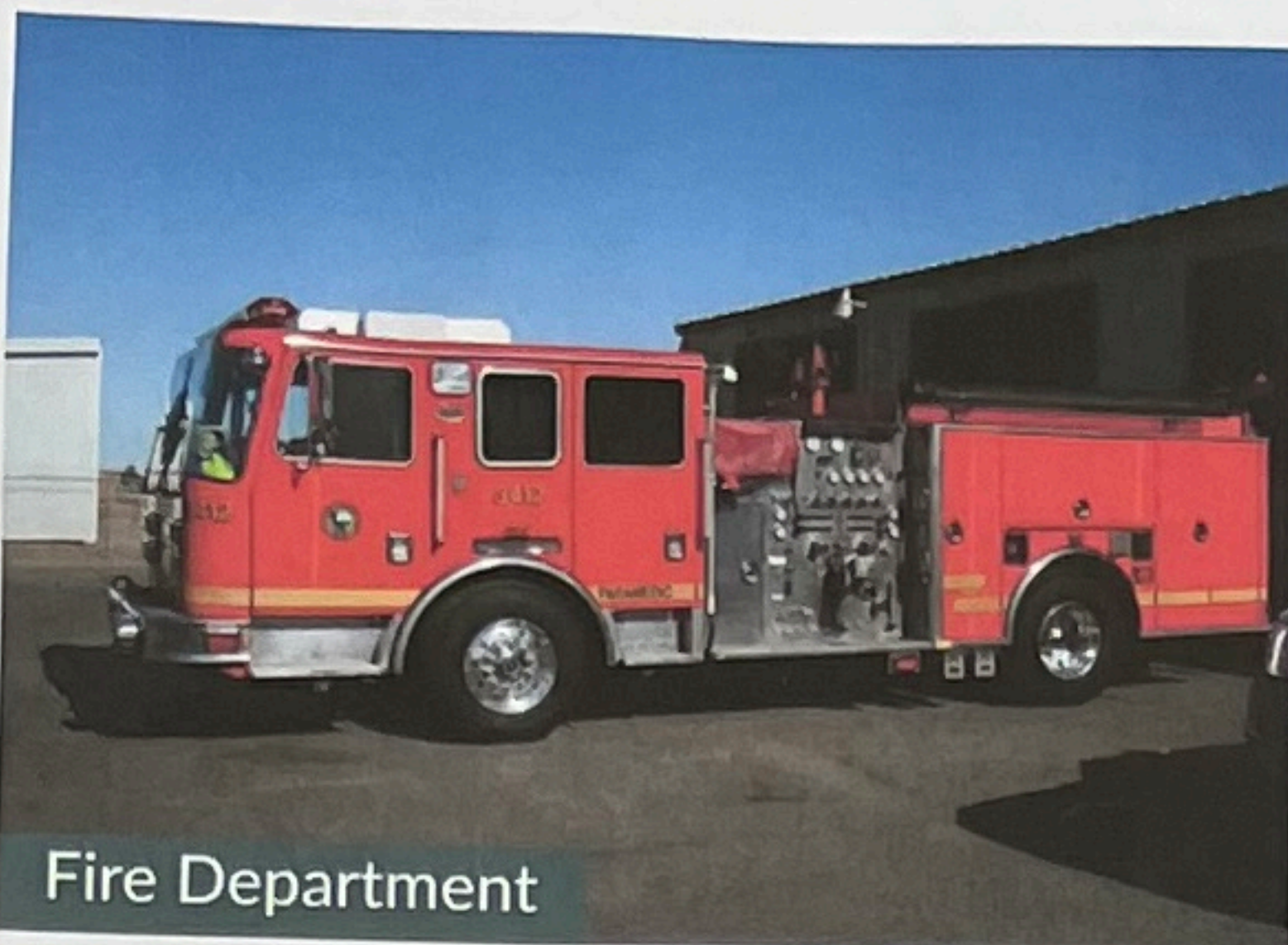
What are we missing?



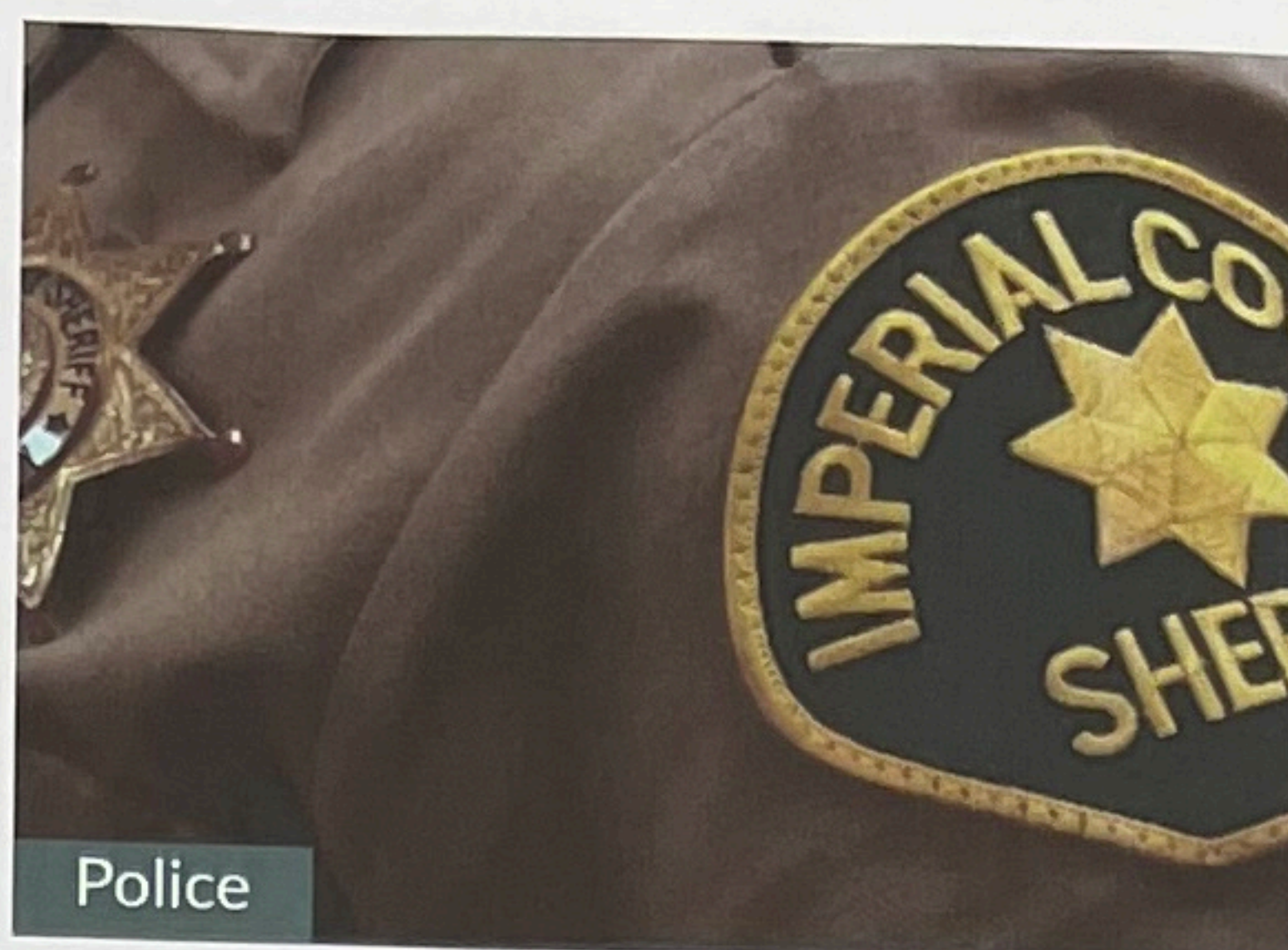
PUBLIC SERVICES



Libraries



Fire Department



Police



Community Services

Constraints

- Lack of existing infrastructure to provide public services, such as water for fire protection.
- Expanding services requires public funding sources.
- A growing population and workforce would put stress on existing facilities and may cause response times to suffer.

What comes first
the infrastructure
or development?
What is private
industry
support on this?

What are we missing?

Where will water supply
be coming from?

Health or
emergency
urgent
care limitations

County
↓
Local Fire
public safety
needed

Can you explicitly
define public
service? Will the
investment include
medical infrastructure?
We are facing a close
crisis w/ the potential
closing of ECRMC.

Will you be investing
in medical
infrastructure
as an aggregate?
Both of the IV's
hospitals have
less than a C
rating.

Where is
Bombay
Tonight?

Opportunities

- Effective distribution of information to improve the community's access to public services and resources.
- Continuing agreements between city departments, special districts and the County to provide police and fire protection support.
- Meet or improve upon performance standards for emergency response time through effective training and staff recruitment.
- Target state and local funding towards educational improvements and expansion of available educational resources and facilities.
- Leverage Development Impact Fees to ensure new developments can connect with existing utility infrastructure and are provided the same standard of living to residents in an incorporated area.

What are we missing?

Support for
Learning Centers
and Child
Care resources

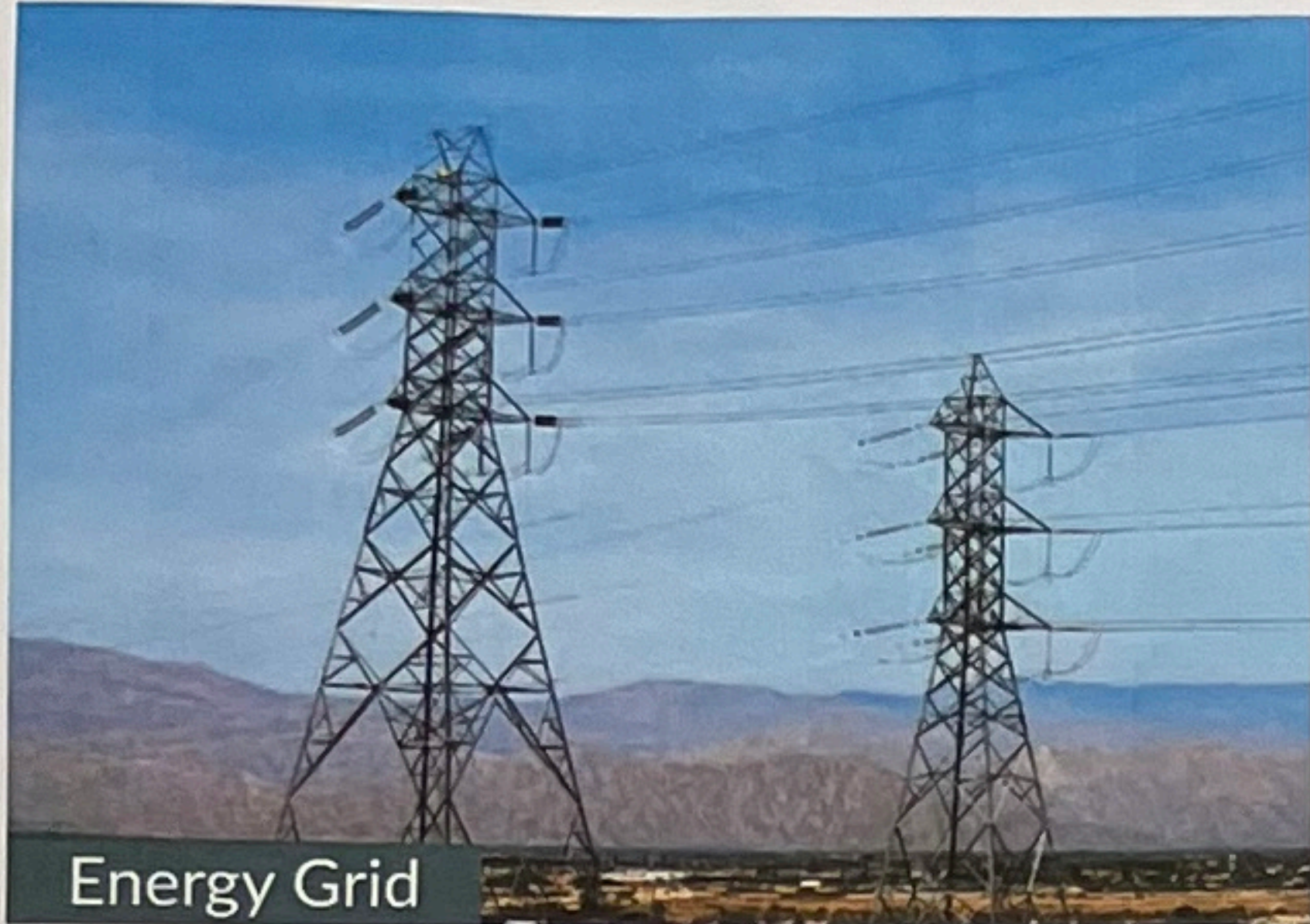
How accessible
will these
improvements be?

Hospitals
Vigant Care
Needed

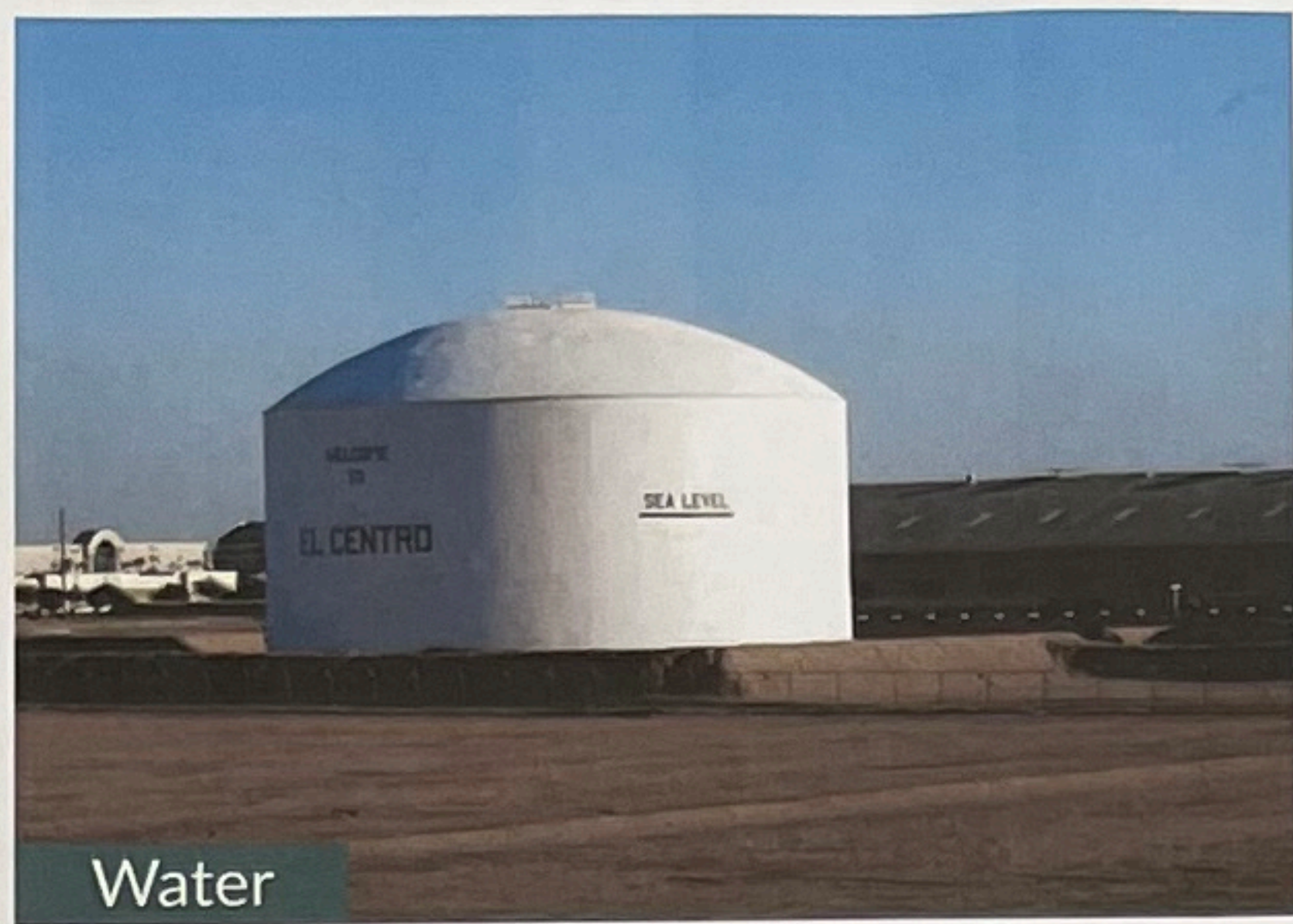
LITHIUM
VALLEY
VISITORS/INFO
CENTER



INFRASTRUCTURE



Energy Grid



Water



Telecommunications



Wastewater

Constraints

- Existing energy grid had lower voltage transmission lines through the Study Area
- Minimal telecommunication infrastructure in the Study Area
- Lack of stormwater infrastructure
- Wide 100-year floodplain for Alamo and New River
- Water supply availability is limited

Opportunities

- Expand and upgrade transmission lines as future development occurs
- Utilize existing utility structures for telecommunication facilities
- Create program for new stormwater infrastructure
- Increase peak flow to Salton Sea
- Water quality improvements to Alamo River through restoration and water quality management plans
- Create policies for proposed land uses to conserve water usage

What are we missing?

Using JAR
BRACKISH
WATER
FOR
PRODUCTION
CONSERVATION

Regional
Water
PLANT/S
AS OPPOSED
TO PRIVATE

What will
happen to
Bombay?

Will infrastructure
updates go beyond
Lithium development?
Or will the sole
purpose of investment
be for Lithium
development?

Projects for
improving quality
of life
-resilience centers
- Recreation
- Health Clinics
Access + Quality

Improve
transportation
• ADA spaces
• Green Areas

Build Regional
Water Plant

What are we missing?

Public Regional Water
Plant would be an
opportunity

Who will fund the
projects noted in
the opportunities?

Who will coordinate
& oversee these
projects?

Funding for
disinfection
facilities
from Border
to Salton
Sea

Non-compliance
of Clean Water
Act
For Alamo +
New River

ENVIRONMENTAL JUSTICE AND SOCIAL CONDITIONS



Socioeconomics



Public Health Concerns



Disadvantaged Communities

Constraints

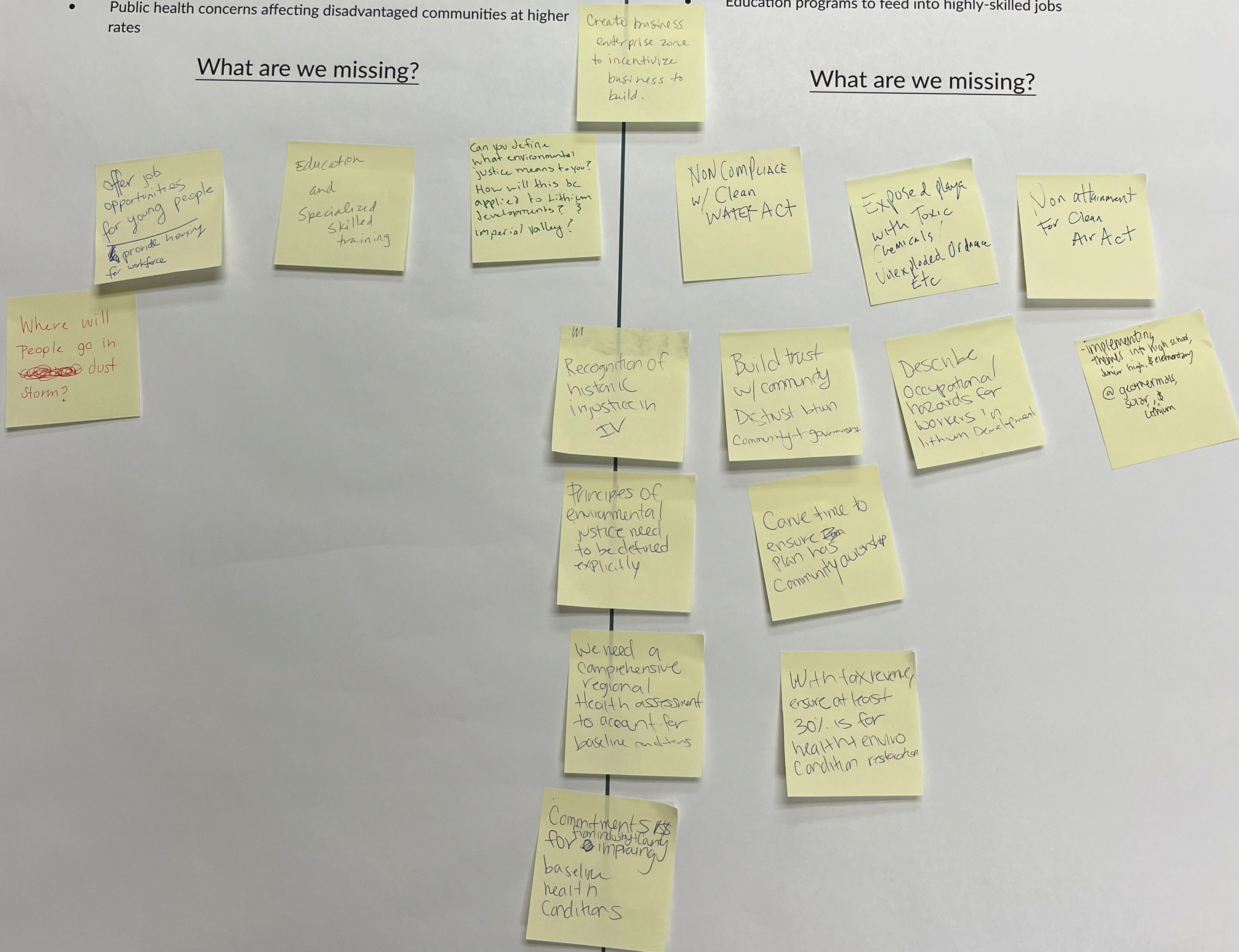
- Public data may be skewed without accounting for undocumented workers
- Population declines indicate out-migration
- Agriculture jobs are seasonal, thus a fluctuating workforce
- Social barriers to resources (e.g. language, income, broadband)
- Public health concerns affecting disadvantaged communities at higher rates

What are we missing?

Opportunities

- Designated "Disadvantaged Communities" may receive higher priority of investment
- High percentage of population at prime-working age
- Funds for restoration of Salton Sea and neighboring communities to lessen public health impacts
- Education programs to feed into highly-skilled jobs

What are we missing?



ENVIRONMENT



Air Quality



Hydrology



Geology



Biology



Paleontology



Noise



Water Quality

Constraints

- The Salton Sea Air Basin is designated as a nonattainment area for pollutants such as O3 and PM10
- Toxic Air Contaminants (TACs) shall be cited at least 1,000 feet from sensitive receptors
- The dry Salton Sea lakebed contains fugitive dust and other toxics related to dust at la playa and should be avoided
- Federally and State-regulated wetlands and riparian communities (i.e. Yuma, New River, Alamo River)
- Potential habitat for special-status species
- Geologic fault activity
- Concern for subsidence and seismicity with geothermal wells and lithium extraction
- Future development would need to be consistent with Land Use Noise Compatibility guidelines for Imperial County and Calipatria
- Formerly agricultural soil may have residual concentrations of pesticides

Do there a feasibility report what the toxics are?

How can this development not further degrade a nonattainment area?

When can the community have a presentation on pilot project?

Question -> Does lithium extraction make the seismic activity in the area worse?

Opportunities

- A Health Risk Assessment as well as a Health Impact Assessment will help inform policy development and ways to minimize and improve health for nearby residents and sensitive receptors
- Further studies of proposed development
- Programmatic mitigation that's inclusive of all foreseeable impacts
- Strict monitoring of subsidence and groundwater management
- Develop proper health and safety soil management procedures for future grading activities where there are concentrations of pesticides in the soil

Question as to worker safety and protection from dust for workers at the facilities.

LACK OF Fresh water

Water & Air Monitoring For Gases, Metals & PM10 & PM 2.5

Exposed playa w/ Toxic Chemicals - Chemical release from Geothermal & Lithium Extraction

What are we missing?

Chemicals being used - Health concerns!

I've trained People are skeptical/ concerned about community concerns in Salton Sea (ie. heavy w/ smell, dead lakes - scores)

Transparency w/ nonattainment status + steps

What will happen with the data that is collected for the health assessments?

Community Participating Processes w/ assessment

Non Compliance w/ Clean Water Act

Non Compliance with Clean Air Act

Health Concerns both community members and industry workers

When did IV get designated as nonattainment?

Who will be responsible for conducting the assessments & how will results be reported?

Collaboration with the Salton Sea Management Program

What steps does the County take to address nonattainment status?

DO NO HARM!

